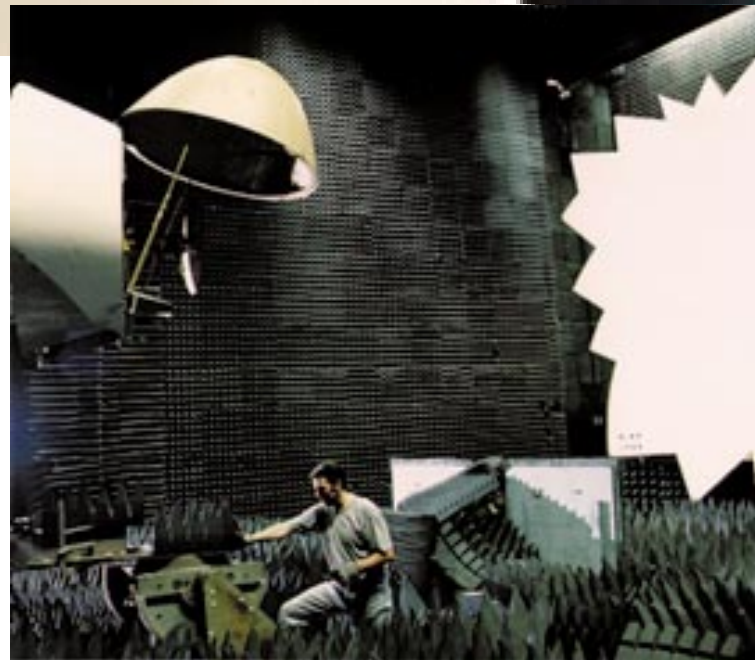


RF and Microwave Testing Services for Commercial and Defense Applications

*MI Technologies
Offers Top-of-the-Line
Product Testing,
Characterization and
Calibration Services
at our Atlanta-Area
Test Facilities.*



MI Technologies' facilities, which feature a large anechoic chamber, compact range and planar scanner, provide an excellent environment for antenna and radome testing.

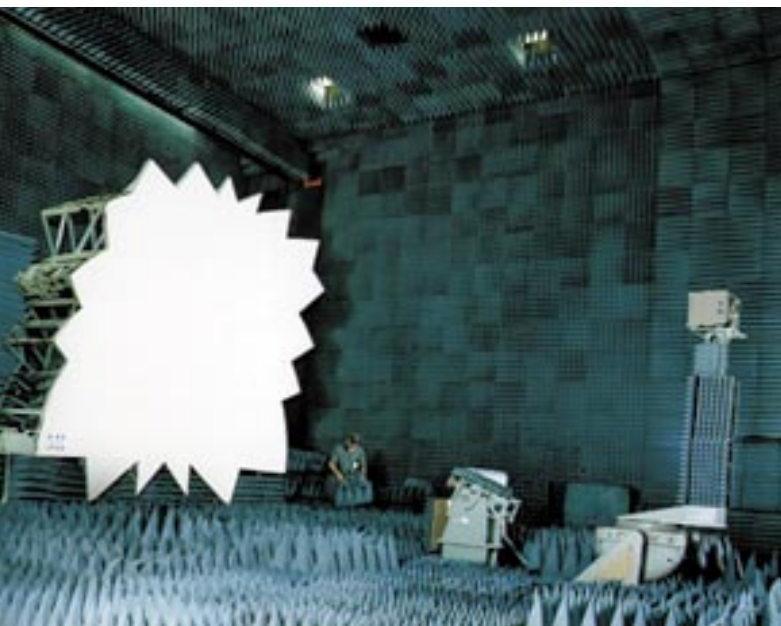
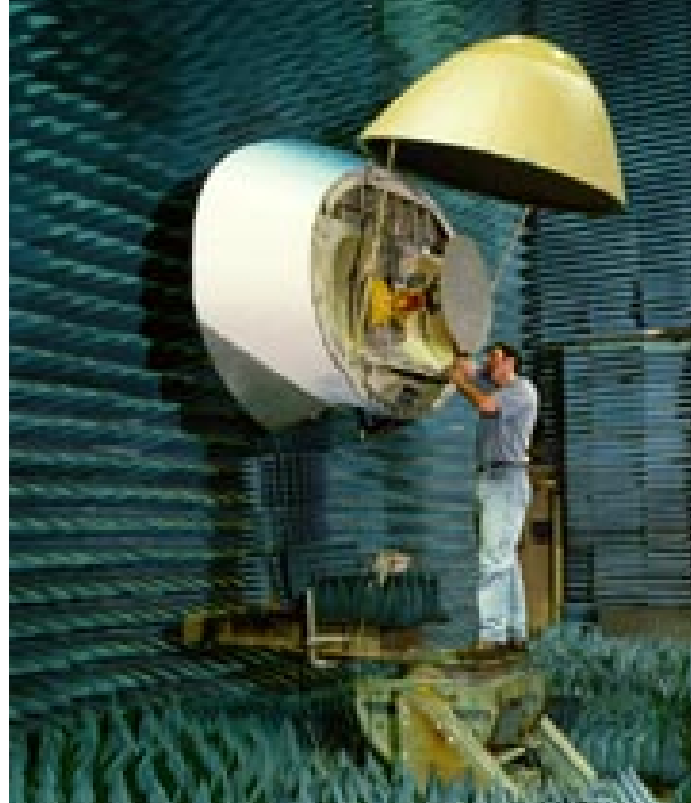
For the customer who does not have a test facility, or whose test capacity is pushed to maximum levels, readily available and reliable outside testing services can be an attractive and affordable solution. MI Technologies' test range comprises an anechoic chamber, 50 feet wide x 50 feet long x 30 feet high, that can be configured as a Free-Space Range or a Compact Range. Our test and measurement resources and expertise, combined with our flexible range set-up, provide the very best facilities for antenna and radome testing, standard gain horn calibrations or other test requirements.

Need a compact range?

MI Technologies' MI-5751 Compact Range provides a cylindrical quiet zone four feet in diameter and four feet in length with an amplitude taper of 0.5 dB or less. Total phase variation within the quiet zone is less than 10 degrees. The test zone may be expanded to six feet horizontally and five feet vertically with amplitude taper of up to 1.0 dB. Measurements from

4 to 18 GHz are typical, and measurements down to 2 GHz and up to 94 GHz are available depending upon the test article size and configuration.

The standard test positioning system provides four axes of AUT movement (roll over azimuth over elevation over slide) and supports test loads up to 3000 lbs. A wide variety of positioning requirements can be satisfied through use of alternate available positioning system components and fixtures.





Flexibility is also provided in selection of test and measurement equipment that is appropriate to the job. A fully automated system, controlled from an MI-3001 Data Acquisition and Analysis Workstation, is employed where applicable. Manual systems configured to address specific needs are also readily available. Amplitude, phase, polarization, and gain measurements at single frequencies or multiple frequencies may be obtained as required. All systems are capable of providing acquired data in printed output and digital file formats.

MI Technologies offers a variety of testing services:

Full Service Testing

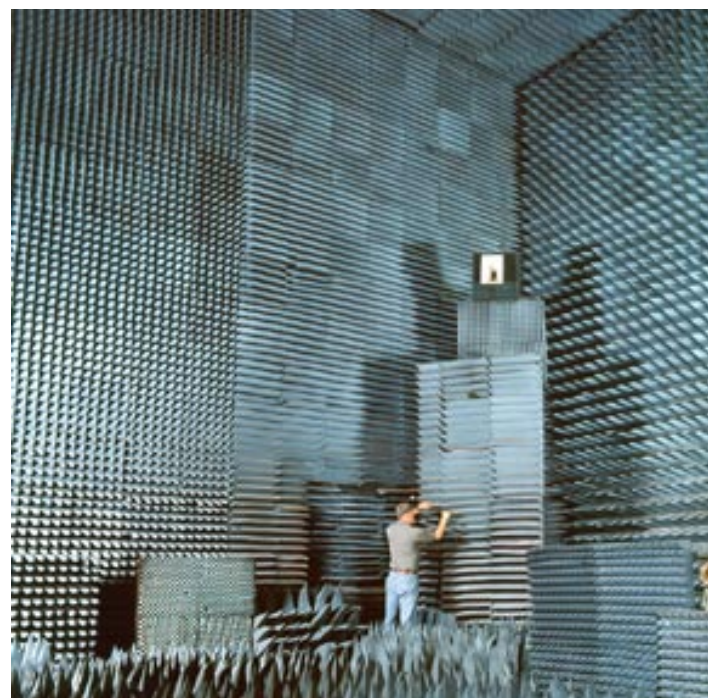
MI Technologies takes full responsibility to perform and report a complete performance characterization, as specified by the customer.

Supported Testing

Customers perform on-site direction of the tests, while MI Technologies provides the test range and a test system operator.

Limited Support Testing

Customers direct the testing and operate the test system, while MI Technologies provides test facilities and limited support.



Facilities ■

Anechoic chamber 50' wide x 50' long x 30' high with adjacent control room, antenna measurement system, MI-5751 compact range, and overhead crane system.

Antenna Measurements ■

Amplitude, phase, polarization and gain measurements at single or multiple frequencies and polarizations.

Frequency Range ■

.1 to 94 GHz

Positioning Equipment ■

Standard systems provide four axes AUT control with test loads up to 3,000 pounds. Alternative systems are available. A 6' x 8' planar scanner for near-field measurements is also available.

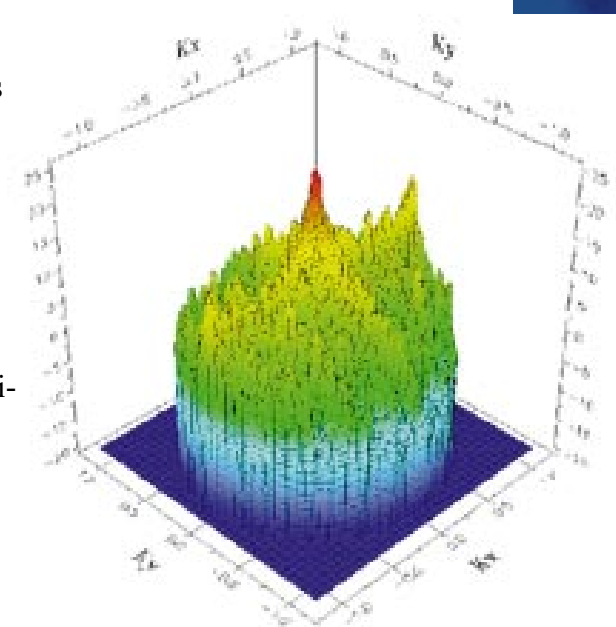
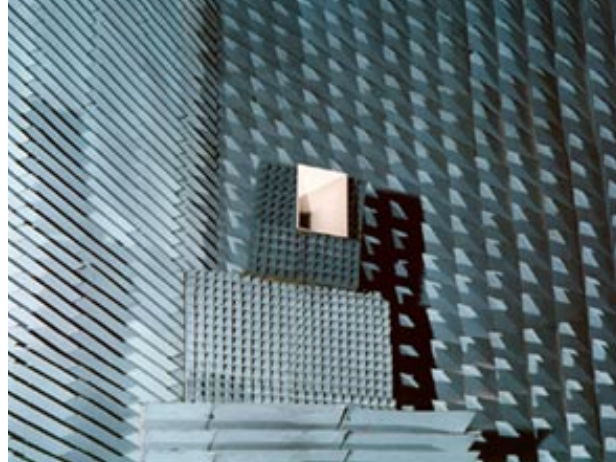
Data Acquisition and Analysis ■

The MI-3001 Workstation can be used to perform a wide range of tests including standard antenna and radome measurements. The workstation allows operators to create rectangular, polar, isometric and contour data presentations and reports. The data output capability enables integration into any analysis or graphical application.

Support Services ■

MI Technologies' engineering staff includes highly experienced test and system engineers who can define the test requirements, establish the test set-up, and analyze the resulting test data. Special fixturing needs are addressed by our mechanical engineers.

For more information on MI Technologies' Test Facilities, contact MI Technologies Customer Support at 800-854-3660 or your local MI Technologies sales representative.



4500 River Green Parkway, Suite 200 • Duluth, GA 30096-2580
Tel: 800-854-3660 • Fax: 678-475-8391 • E-mail: Service@mi-technologies.com

© Copyright 2000 MI-Technologies, Inc. All rights reserved. Printed in USA.
The MI Technologies logo is a trademark of Microwave Instrumentation Technologies, LLC.
All product specifications subject to change without notice.